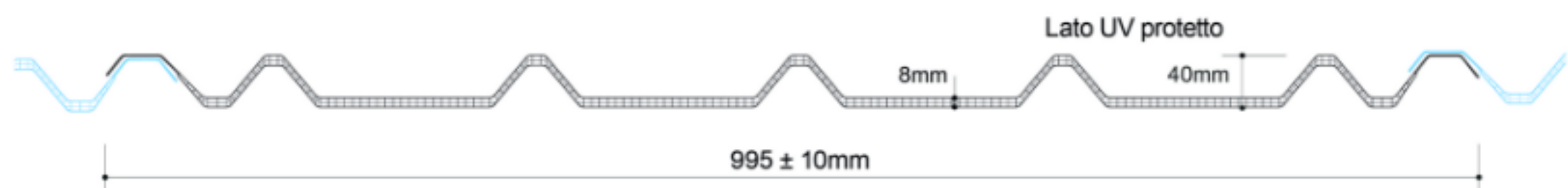
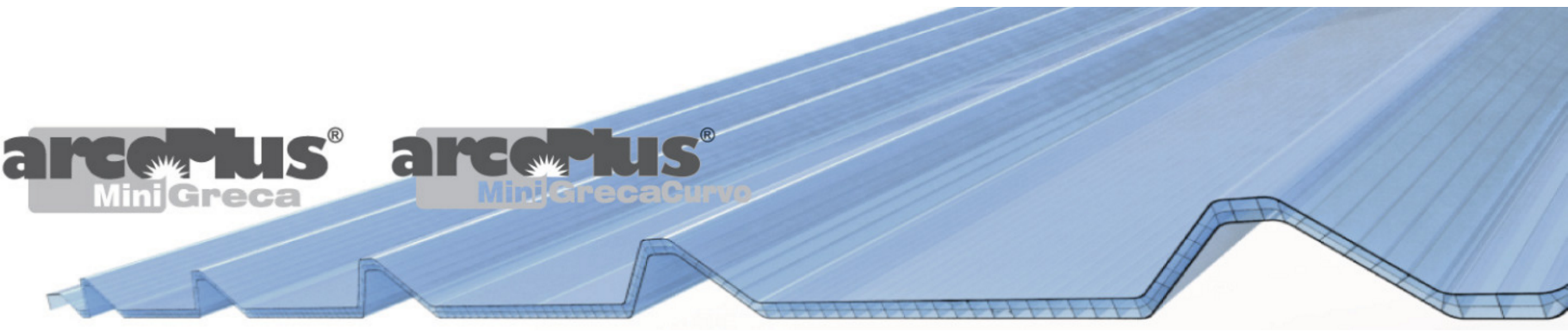


arcoPlus® MiniGreca



Modular system of corrugated UV protected multiwall polycarbonate for translucent curtain walls and roofing applications

arcoPlus®MiniGreca, is a complete system for the construction of translucent curtain walls and roofing and includes a range of accessories that make it suitable for all purposes. Thanks to the specific design of the profile the system is perfectly compatible with all the main types of panel.



Features

Advantages

- ✓ Transverse overlap
- ✓ Longitudinal overlap
- ✓ Thermowelded panels' edge
- ✓ Light transmission
- ✓ Resistance to UV rays and to hail
- ✓ Thermal insulation

Applications

- Roofing
- Skylights

Production standards

Thickness	8mm
Profile height	40mm
Structure	3 walls
Effective modular width	995 ± 10mm
Available colors	Cristal/Opal

Features

Thermal insulation	3,0 W/m²K
Acoustic insulation	16 dB
Linear thermal expansion	0,065mm/m/°C
Temperature range	-40°C +120 °C
U.V. rays protection	Coextrusion
Fire reaction EN 13501-1	EuroClass B-s1,d0

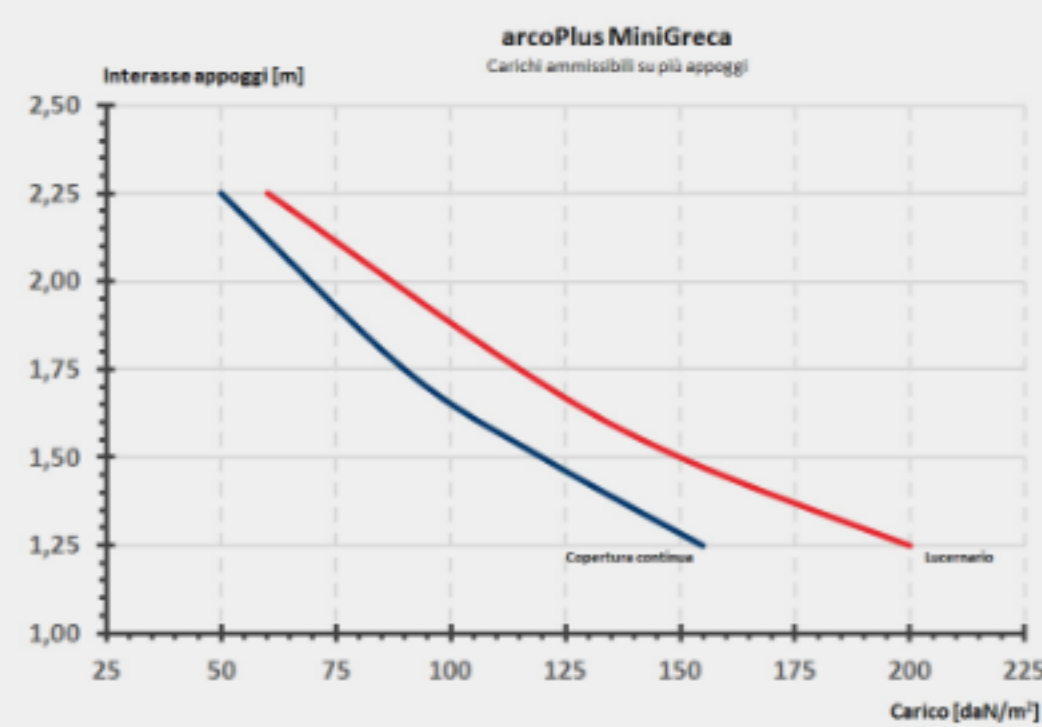
Special treatments



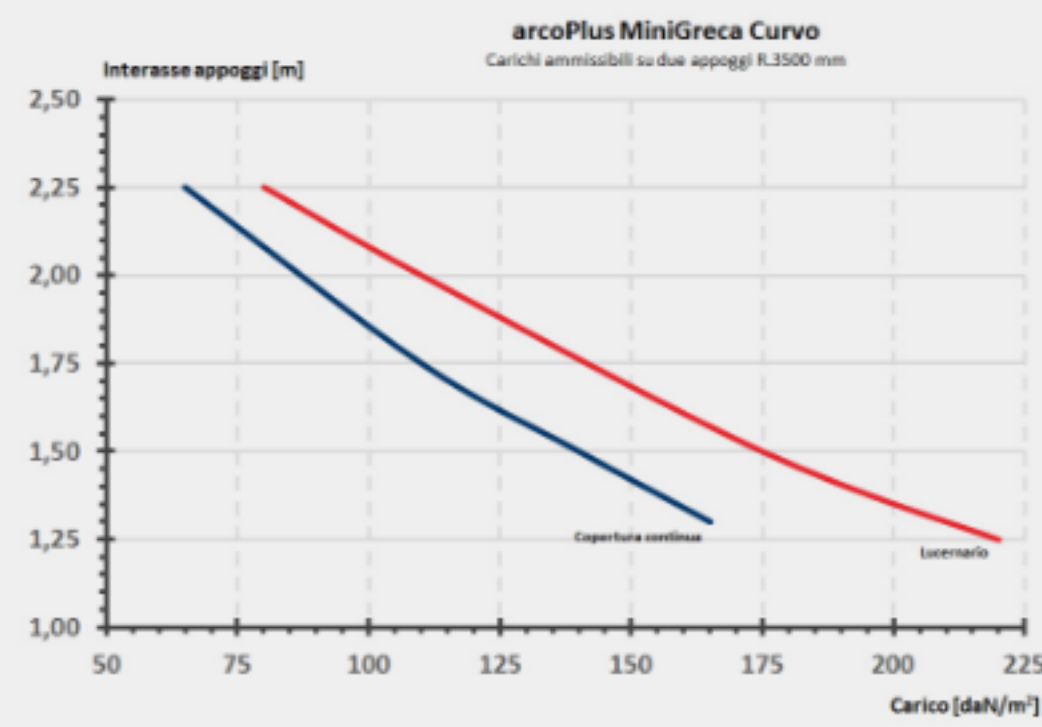
Load resistance



Multi supports



Curved supports



Easy installation arcoPlus® MiniGreca



Skylight gutter ridge application

Skylight obtained by means of lateral overlapping with any type of corrugated roofing sheet. Recommended minimum slope 5%.



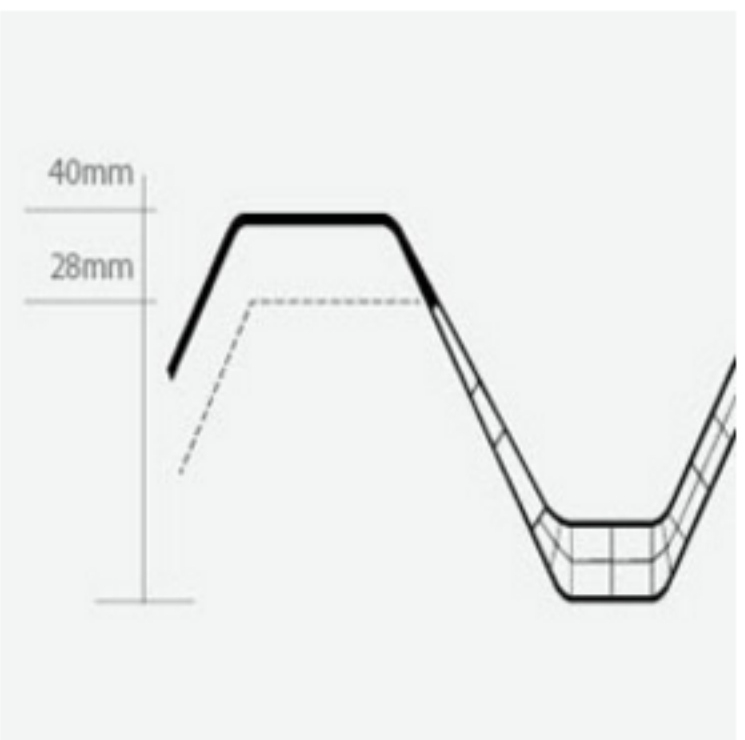
Continuous roofing application

Construction of continuous roofing with continuous lateral overlapping of panels. Recommended minimum slope 7%.

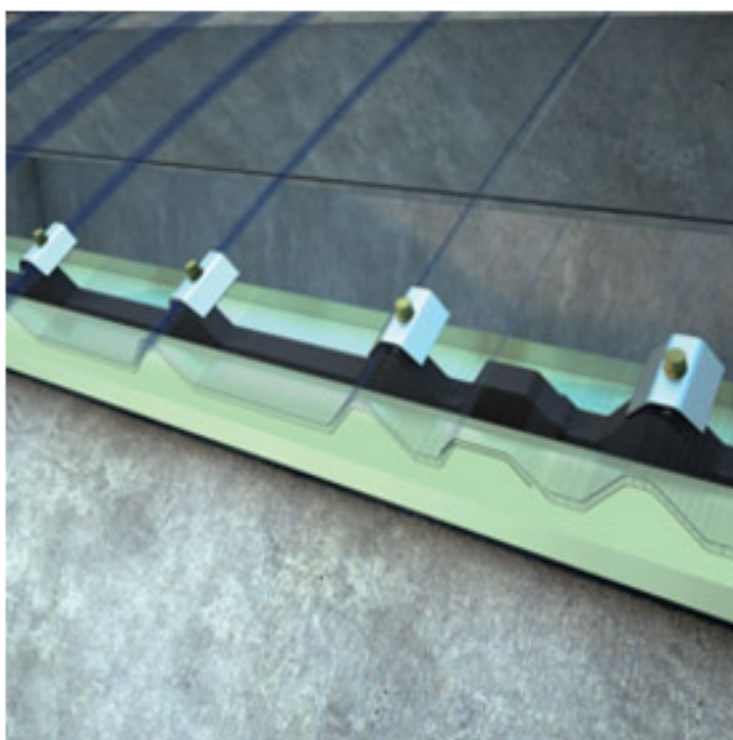


Creation of large areas of transparent roofing

Detail of insertion of the PE-LD seal



The ends of the sheets can be modified to fit the different types of roofing profile.



Detail of double anchor bracket anchored to roofing structure

Easy installation arcoPlus® MiniGreca curved



Skylight gutter ridge application

Panels laterally overlap insulated corrugated roofing panels, or fibre cement sheets. Recommended minimum slope 7%.



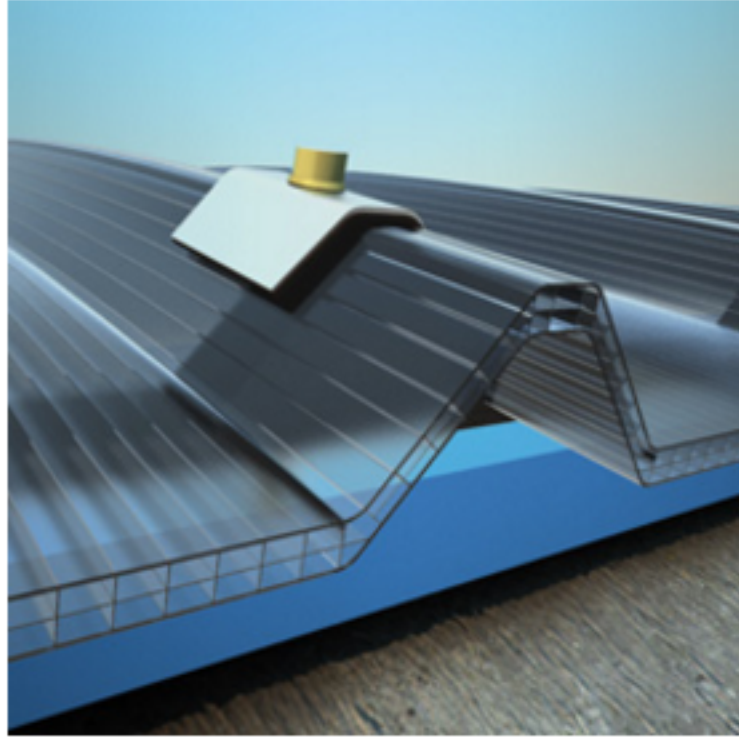
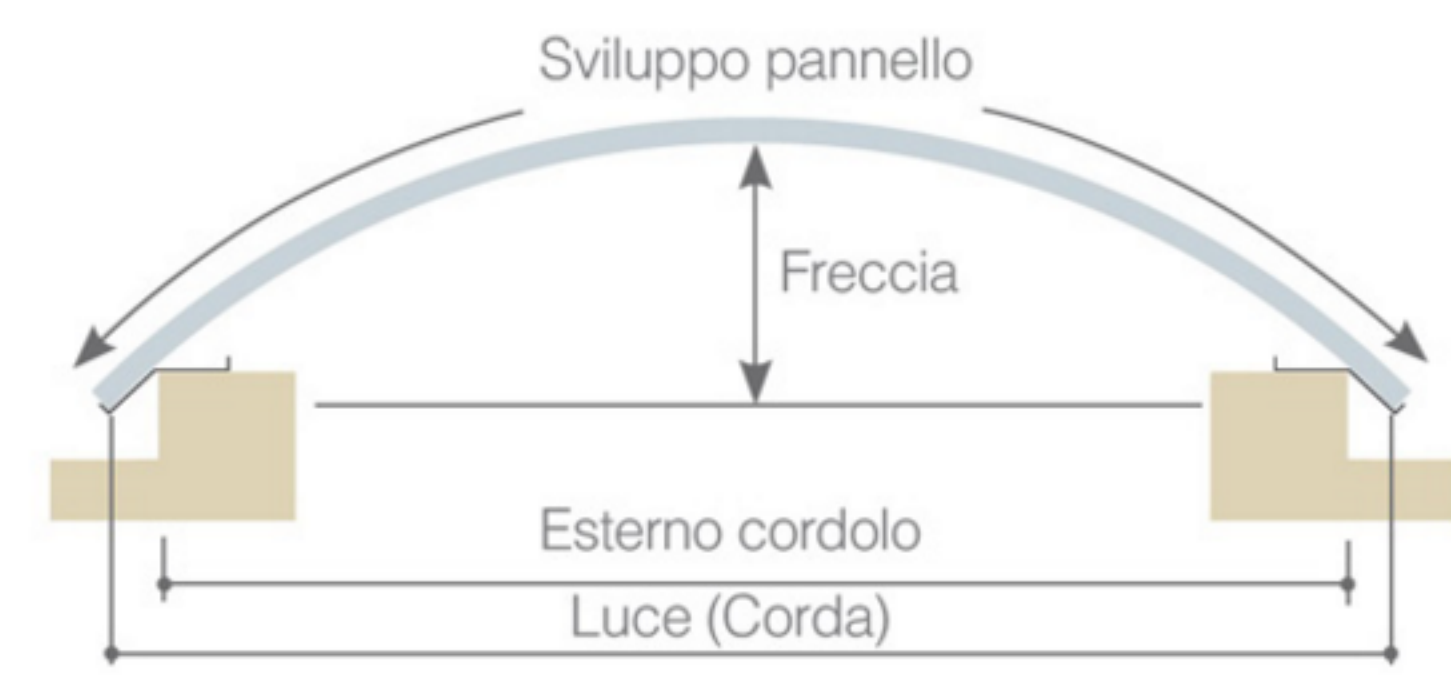
Continuous roofing application

Construction of continuous roofing/wall with continuous lateral overlapping of polycarbonate panels.

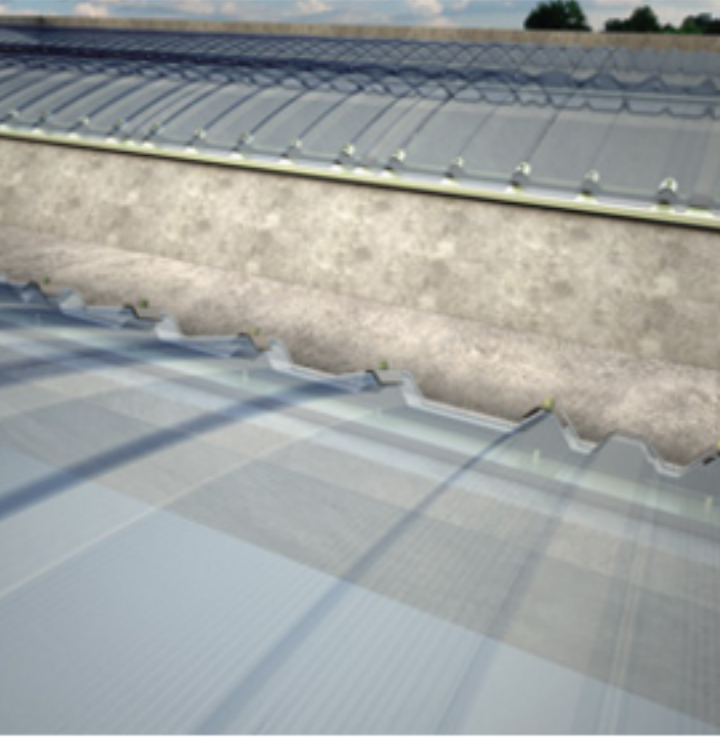
DEVELOPMENT TABLE

R.3.500mm			
Span	Rise	Development	
1.000	36	1.009	
1.200	52	1.213	
1.400	71	1.418	
1.600	93	1.623	
1.800	118	1.831	
2.000	146	2.040	
2.200	177	2.251	
2.400	212	2.466	
2.600	250	2.679	
2.800	292	2.897	
3.000	338	3.118	

MAXIMUM DEVELOPMENT	
Radius	3.500mm
Development	5000



This is done by drilling and inserting a screw with Vipla washer and cap



Industrial contiuous roofing

Accessories



cod. 4404  
Kit 21 - 28



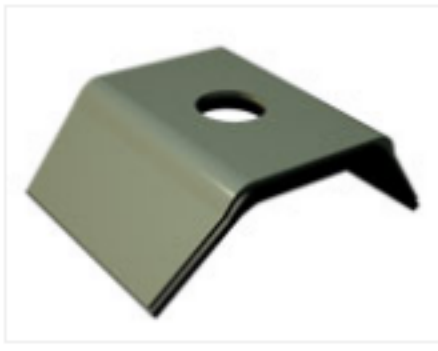
cod. 4405  
Gasket for gutter PE-LD



cod. 4406  
Kit 0 - 40



cod. 4432  
Screw with 6.3x80 Vipla washe



cod. 4433  
Aluminium cap with gasket