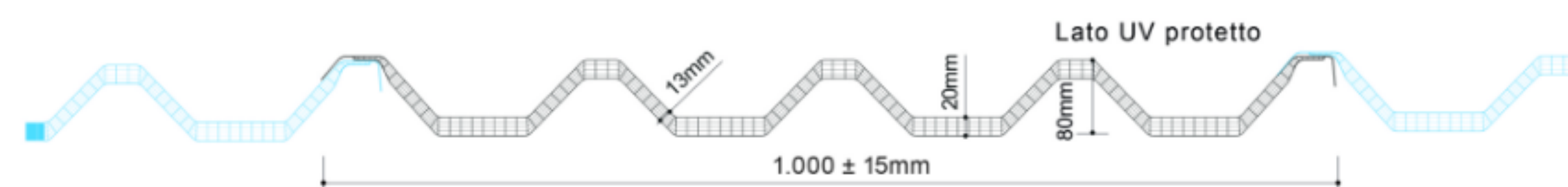
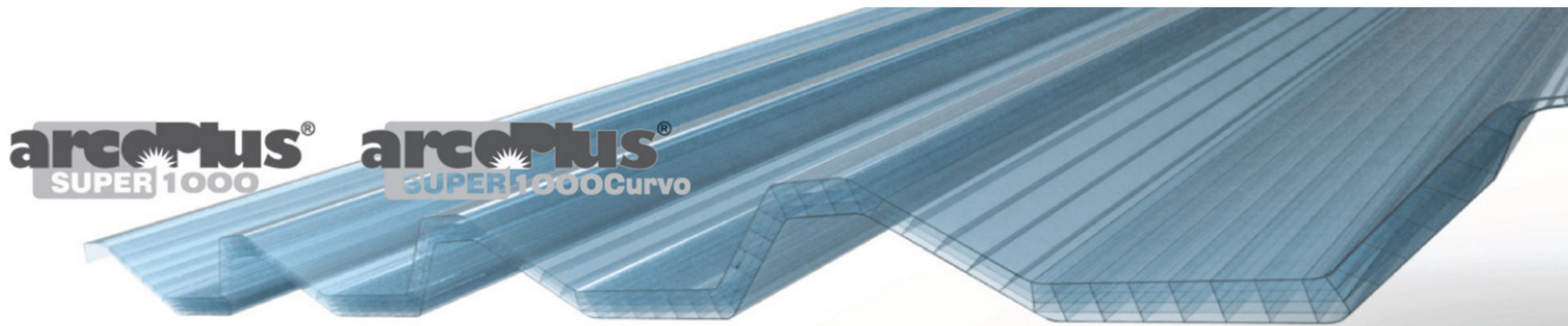


arcoPlus® SUPER1000



Modular system of corrugated UV protected multiwall polycarbonate for translucent curtain walls and roofing

arcoPlus®SUPER1000 is a modular corrugated system consisting of 5 co-extruded polycarbonate walls, in 13*20mm thickness, perfectly overlapping lengthwise and enabling continuous coverage and skylights filled gutter. Considering the linear thermal expansion of polycarbonate, to avoid cracks at the through fixings the recommended maximum length is 5,000mm. For higher length of the pitch is better the use of multiple overlapping panels.



Features

Advantages

- ✓ High load resistance
- ✓ Longitudinal overlap
- ✓ Transverse overlap
- ✓ Thermowelded panels' edge
- ✓ Light transmission
- ✓ Resistance to UV rays and to hail
- ✓ Thermal insulation

Applications

- Vertical window
- Roofing
- Curved roofing

Production standards

Thickness	variabile da 13*20mm
Profile height	80mm
Structure	5 walls
Effective modular width	1.000 ± 15mm
Available colors	Cristal/Opal

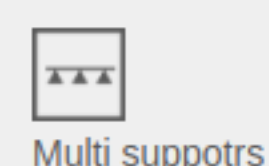
Features

Thermal insulation	1,8 W/m 2 K
Acoustic insulation	18 dB
Linear thermal expansion	0,065mm/m°C
Temperature range	-40°C +120 °C
U.V. rays protection	Coextrusion
Fire reaction EN 13501-1	EuroClass B-s1,d0

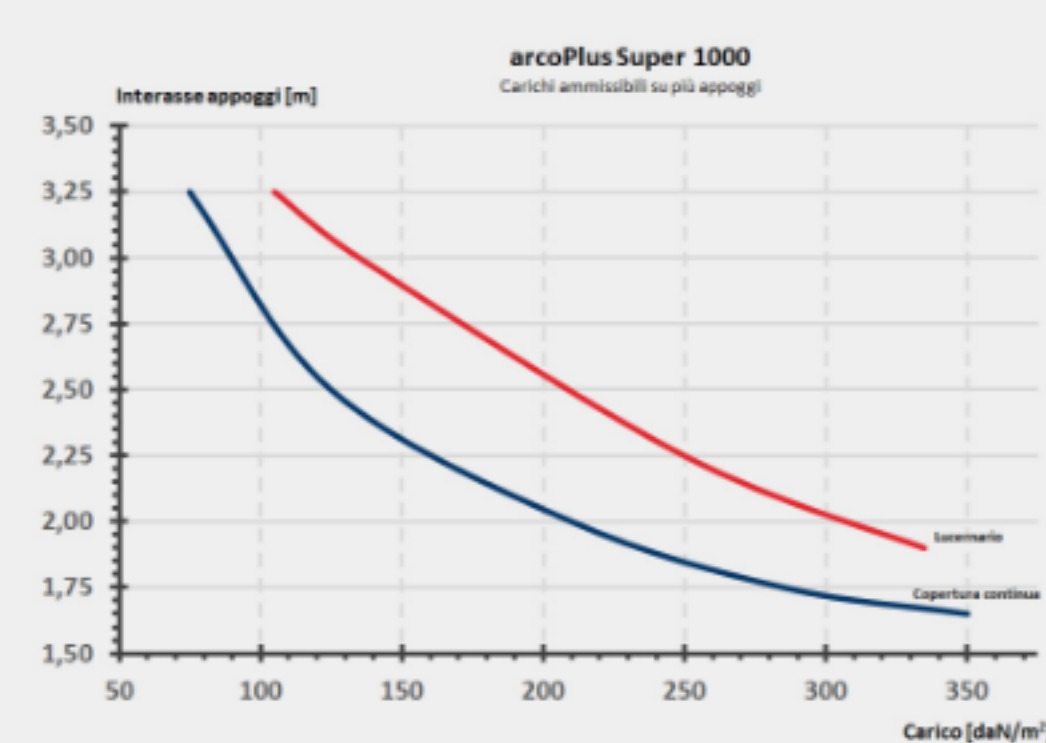
Special treatments



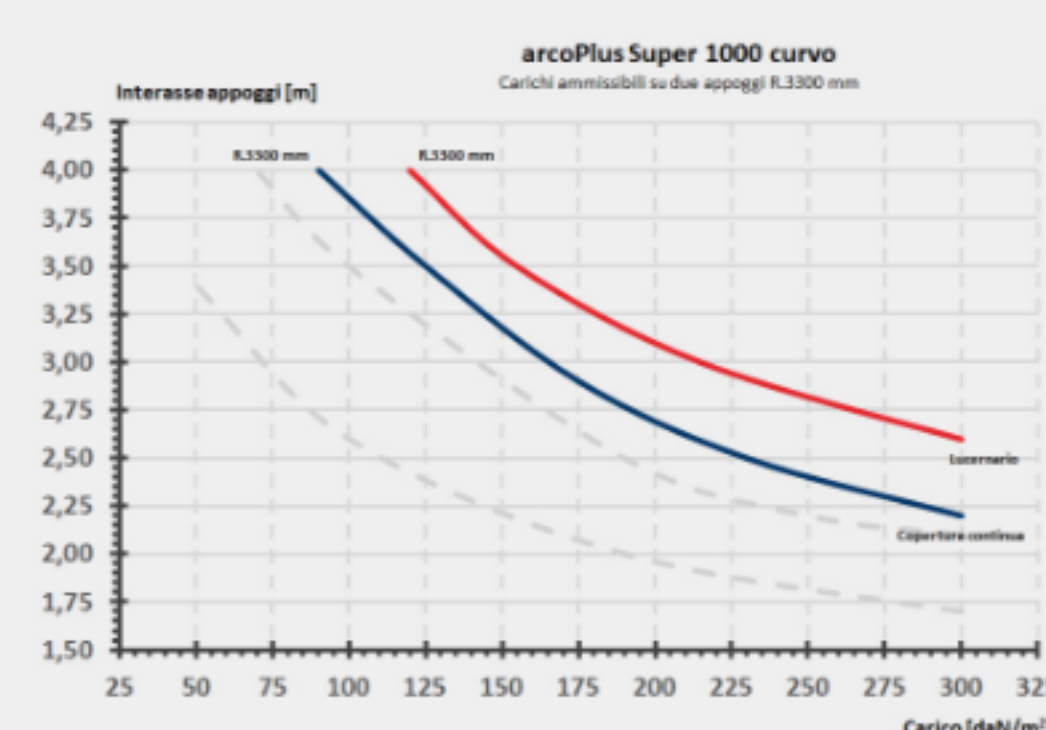
Load resistance



Multi supports



Curved supports



Easy installation arcoPlus® SUPER1000



Skylight gutter ridge application

Panels laterally overlapping insulated corrugated metal roofing panels. Thanks to the specific design of the profile the system is perfectly compatible for overlapping all the main types of panel. Minimum slope 5%.



Continuous roofing application

Construction of continuous roofing/wall with continuous lateral overlapping of polycarbonate panels. For roofing, recommended minimum slope 7%.

Easy installation arcoPlus® SUPER1000 curved



Skylight gutter ridge application

Creation of skylights, achieved by means of lateral overlapping of translucent components with curved metal insulated panels.



Continuous roofing application

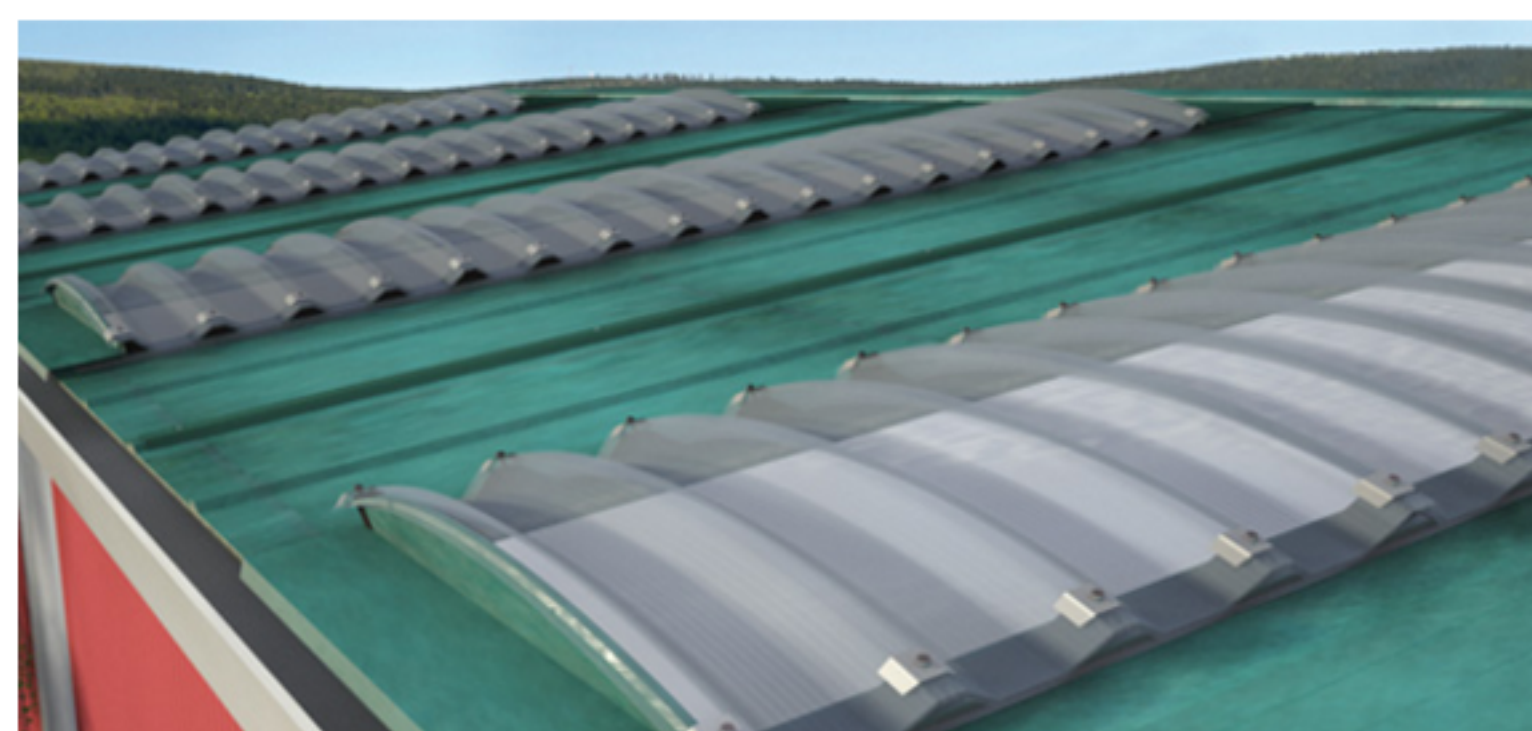
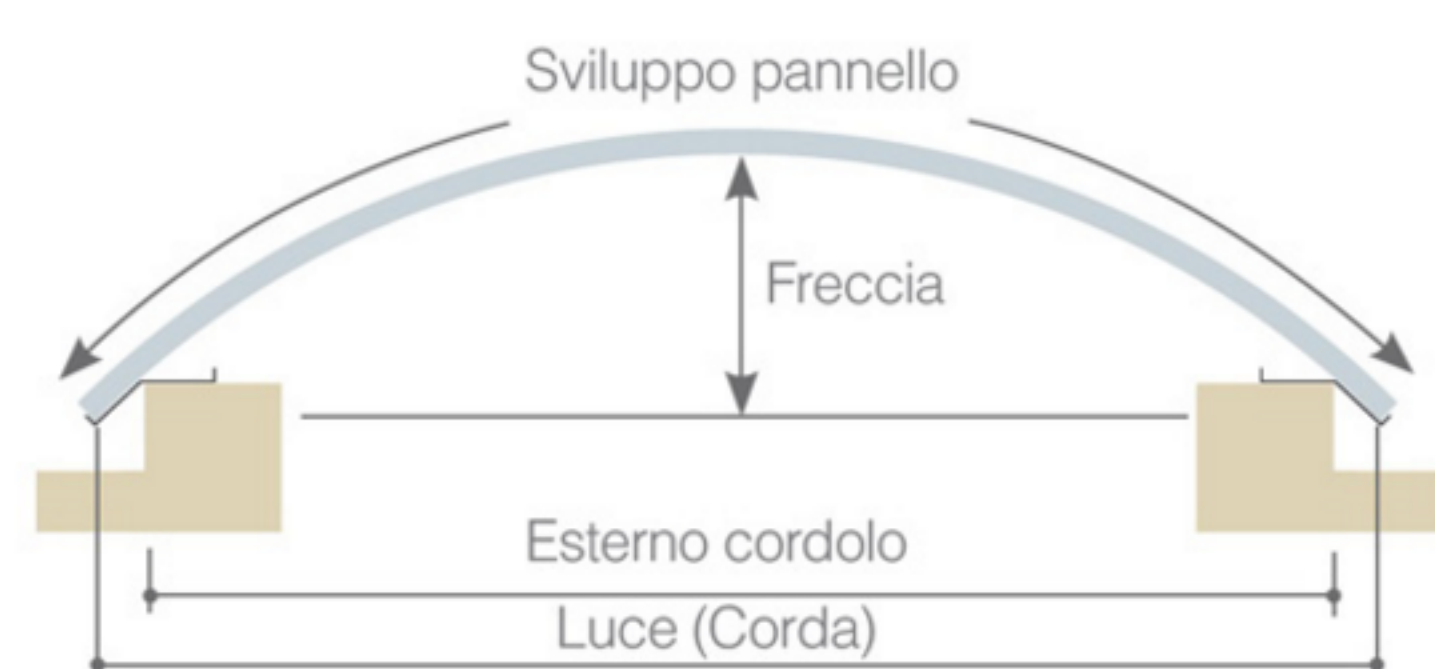
Creation of continuous roofing, achieved by means of continuous lateral overlapping of polycarbonate panels. arcoPlus®SUPER1000 is produced with a radius of curvature R.3.300mm and R.6.000mm.

DEVELOPMENT TABLE

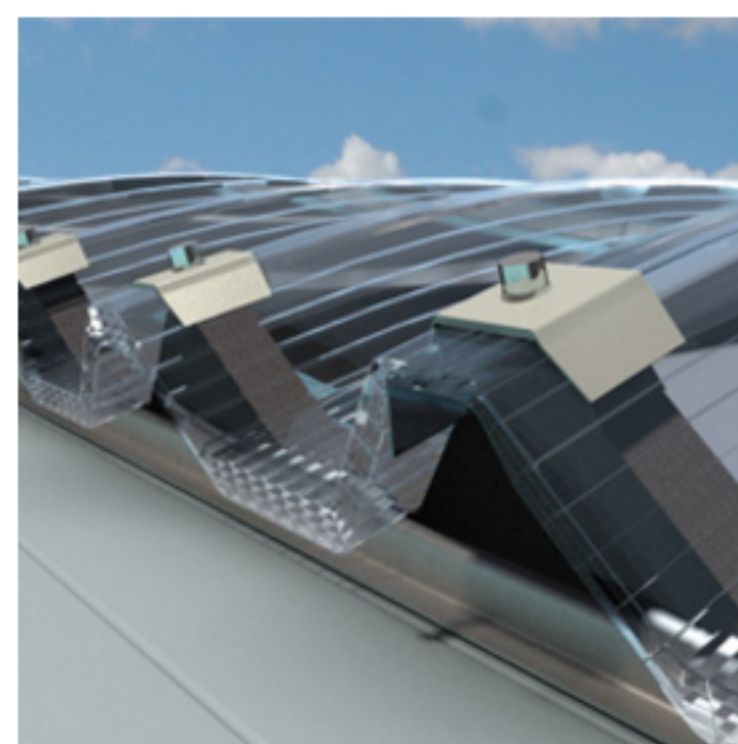
R.3.300mm			R.6.000mm		
Span	Rise	Development	Span	Rise	Development
1.000	38	1.016	1.000	21	1.008
1.200	55	1.221	1.200	30	1.210
1.400	75	1.428	1.400	41	1.413
1.600	98	1.636	1.600	54	1.615
1.800	125	1.845	1.800	68	1.819
2.000	155	2.057	2.000	84	2.023
2.200	189	2.270	2.200	102	2.227
2.400	226	2.486	2.400	121	2.432
2.600	267	2.705	2.600	143	2.638
2.800	312	2.927	2.800	166	2.845
3.000	361	3.152	3.000	191	3.052
3.200	414	3.381	3.200	217	3.261
3.400	472	3.615	3.400	246	3.470
3.600	534	3.854	3.600	276	3.681
3.800	602	4.098	3.800	309	3.892
4.000	675	4.349	4.000	343	4.105
4.200	754	4.608	4.200	380	4.319
4.400	840	4.875	4.400	418	4.535
4.600	934	5.151	4.600	458	4.752
4.800	1.035	5.440	4.800	501	4.971

MAXIMUM DEVELOPMENT	
Radius	3.300mm
Development	5.000

MAXIMUM DEVELOPMENT	
Radius	6.000mm
Development	5.800



Skylight gutter ridge application with cross disposition of the bent panels in polycarbonate



Detail of fixing panels to support structures

Accessories



cod. 4231

Roof profile (2 pieces)



cod. 4232

Sealant tape PE-LD 20x10



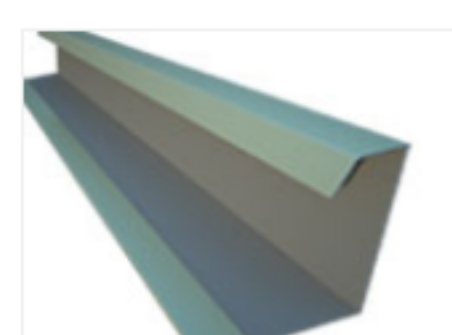
cod. 4233

Screw with 6.3x120 Vipia washer



cod. 4235

Central bracing bracket



cod. 4236

Protected steel profile



cod. 4482

Aluminium cap with gasket



cod. 4655

Tongue and groove gasket in PE-LD



cod. 4658

Gasket for gutter in PE-LD